



The Biomedical Research Workforce: Demographics, Trends, and Questions for the Future

AAMC Advisory Panel on Research
23 May 2007

Norka Ruiz Bravo, Ph.D.
Deputy Director for Extramural Research
National Institutes of Health



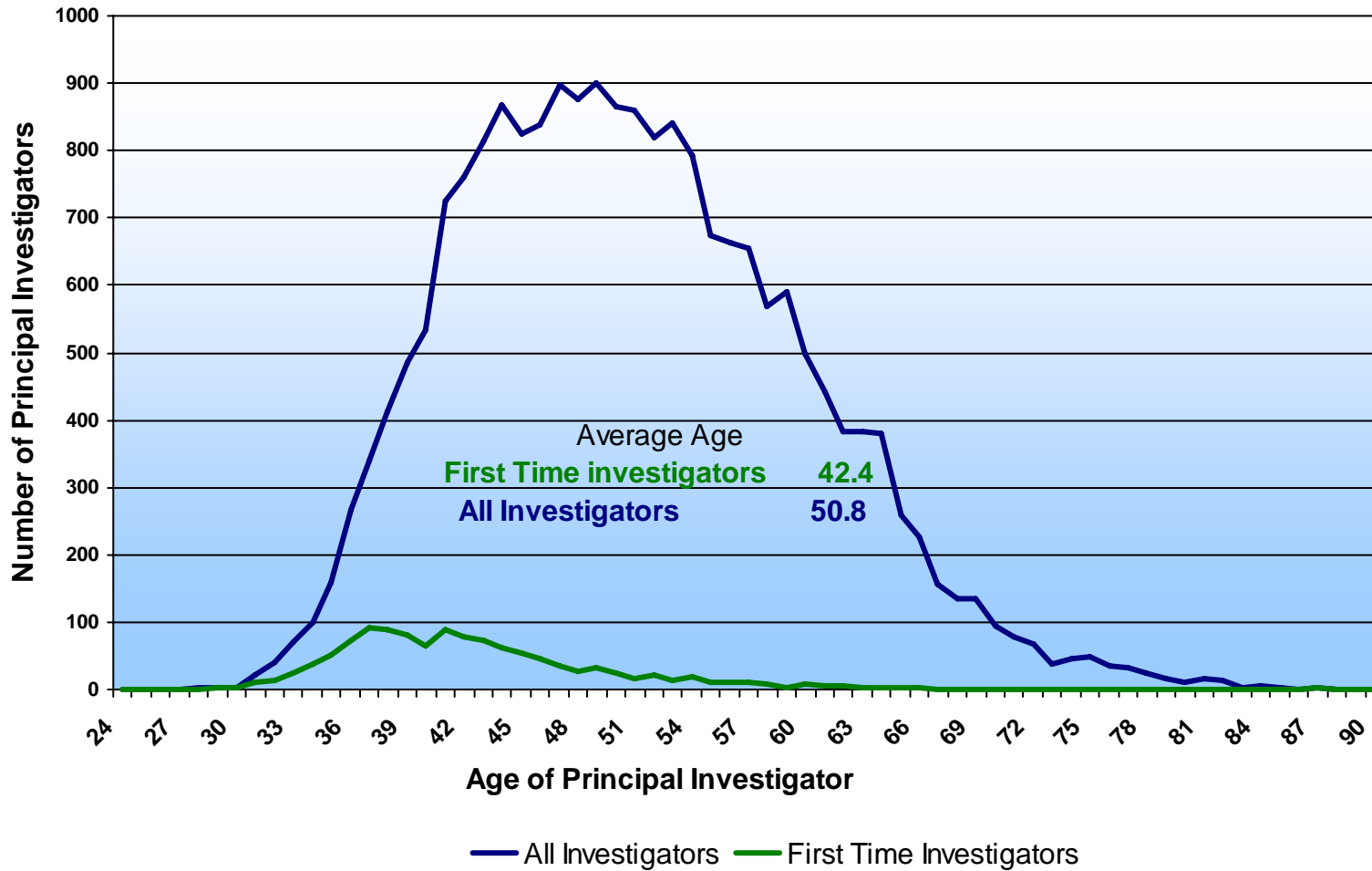


Let's start with demographics and trends...



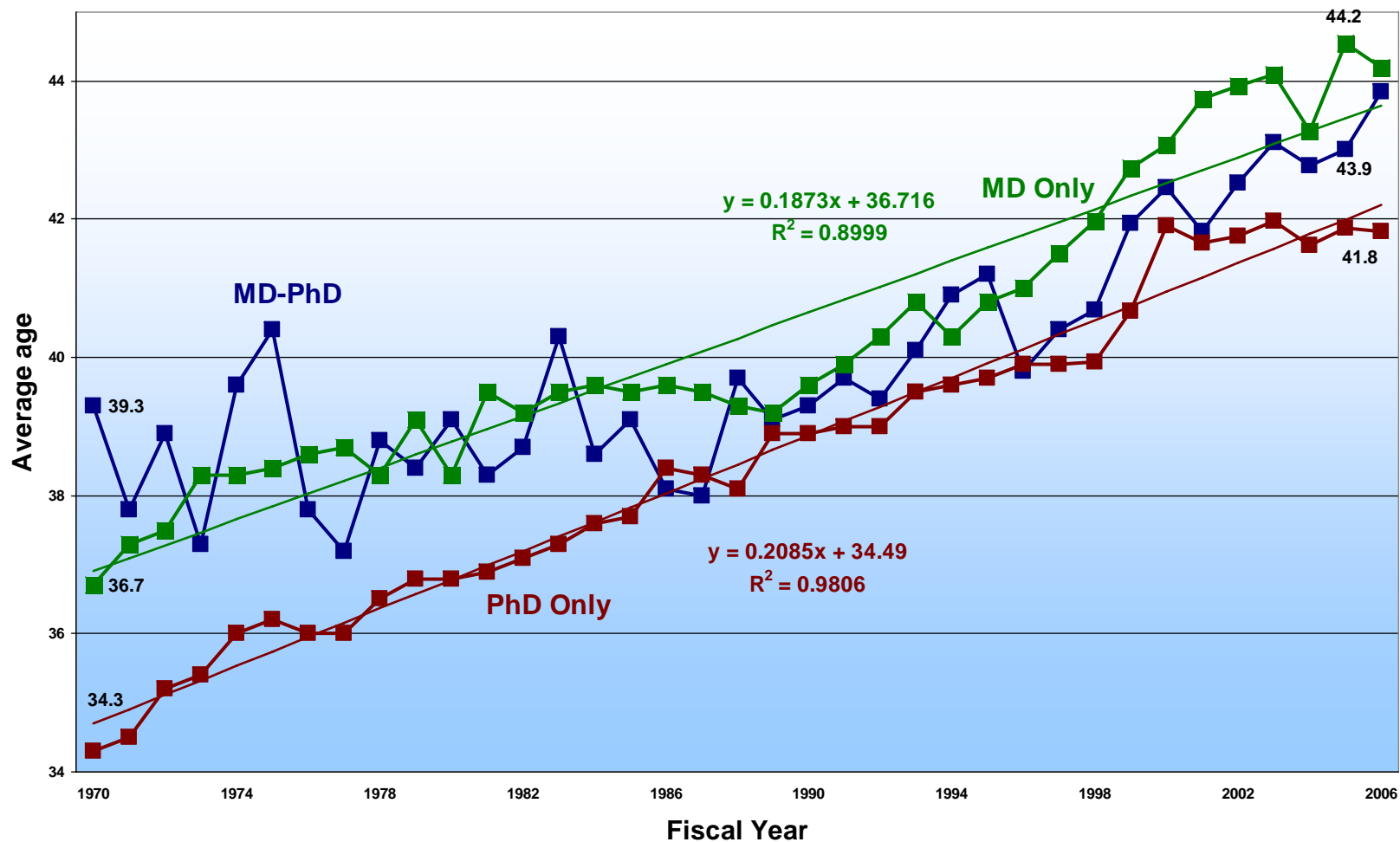


Age of R01 Equivalent Principal Investigators FY 2006





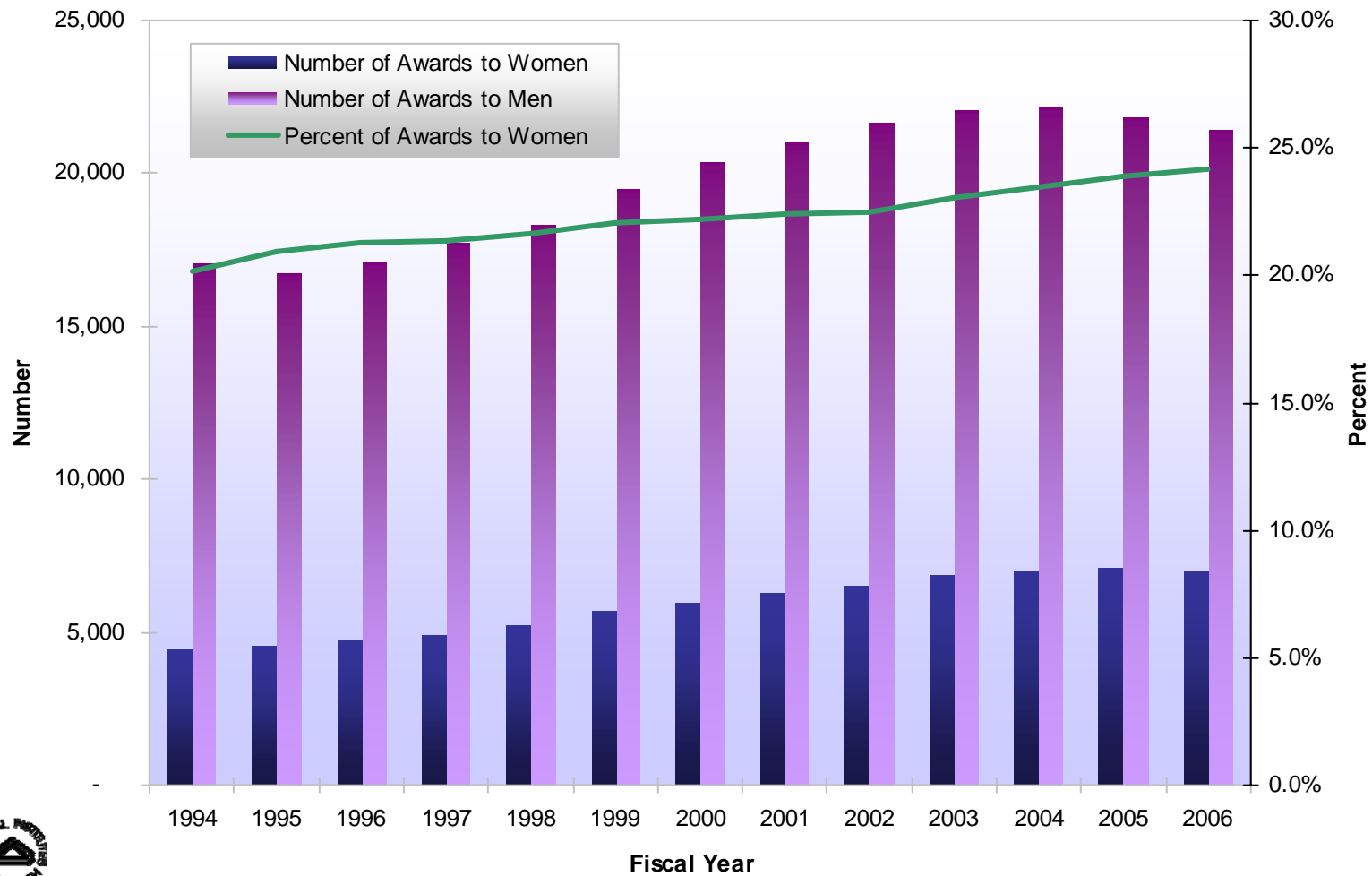
First Time R01 Equivalent Investigators Average Age





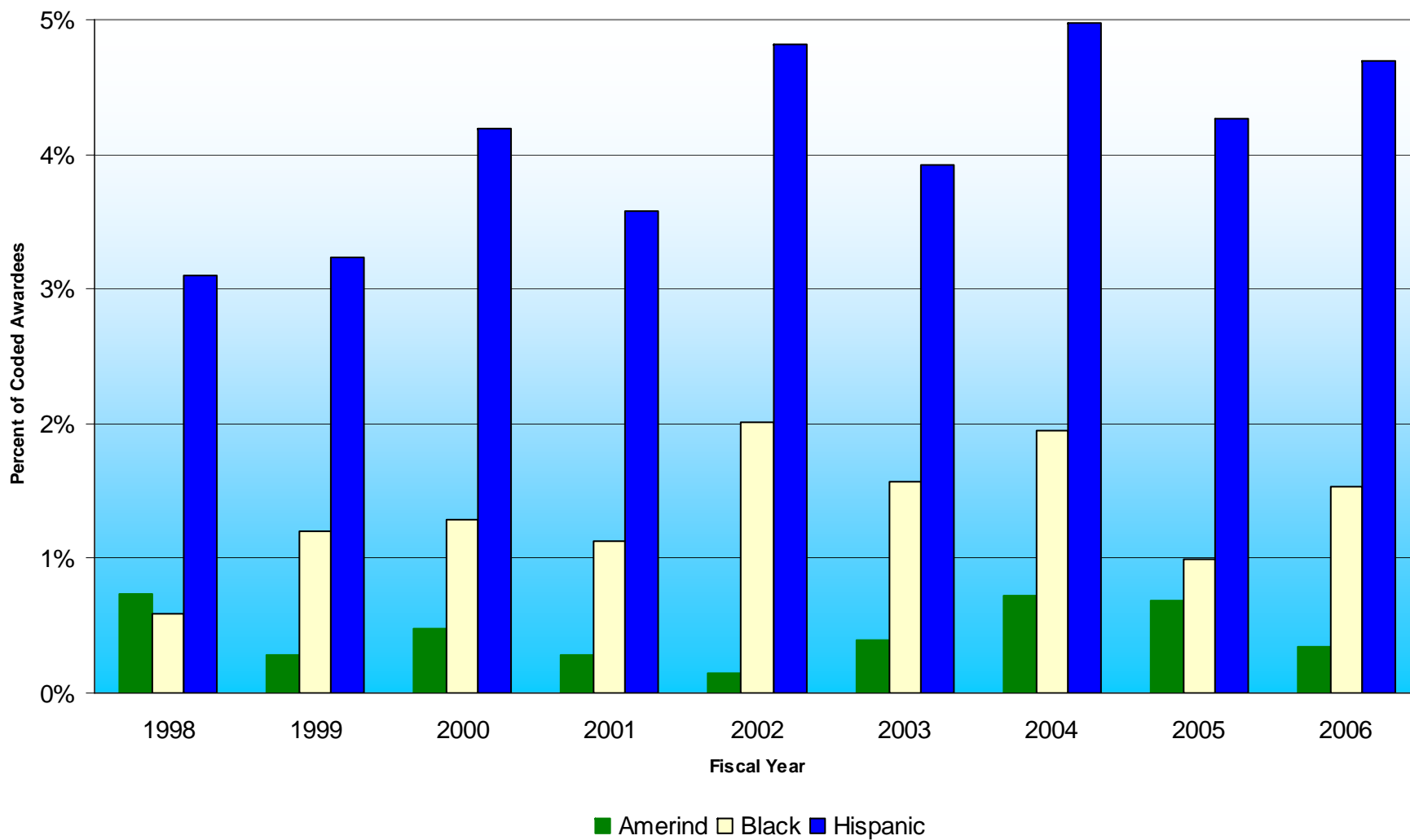
Women Number of R01 Equivalent Awards

Number of R01 Equivalent Awards to Women and Men with Percentage of Awards to Women, FY 1994 - 2006



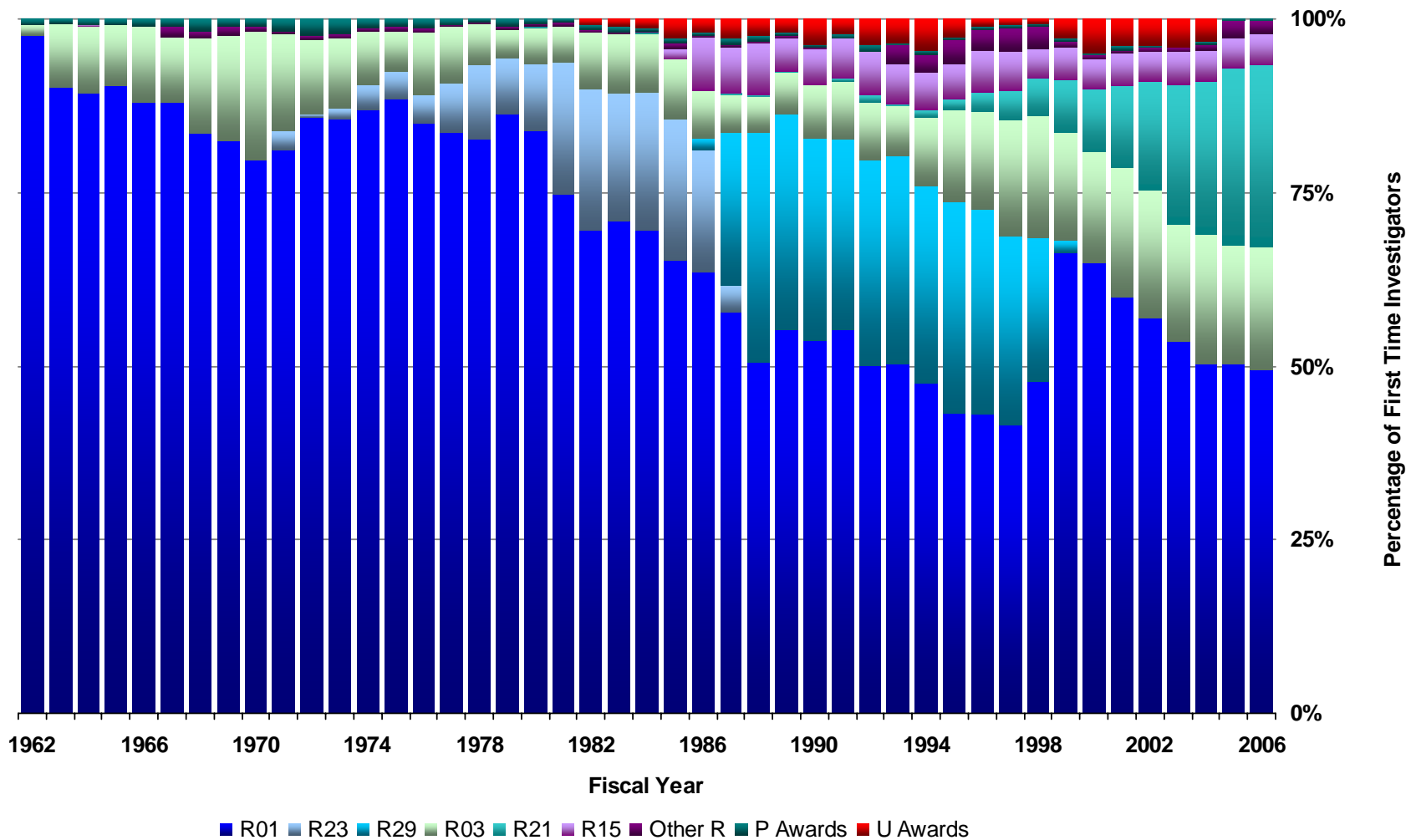


First Time R01 Equivalent Awardees Underrepresented Minorities



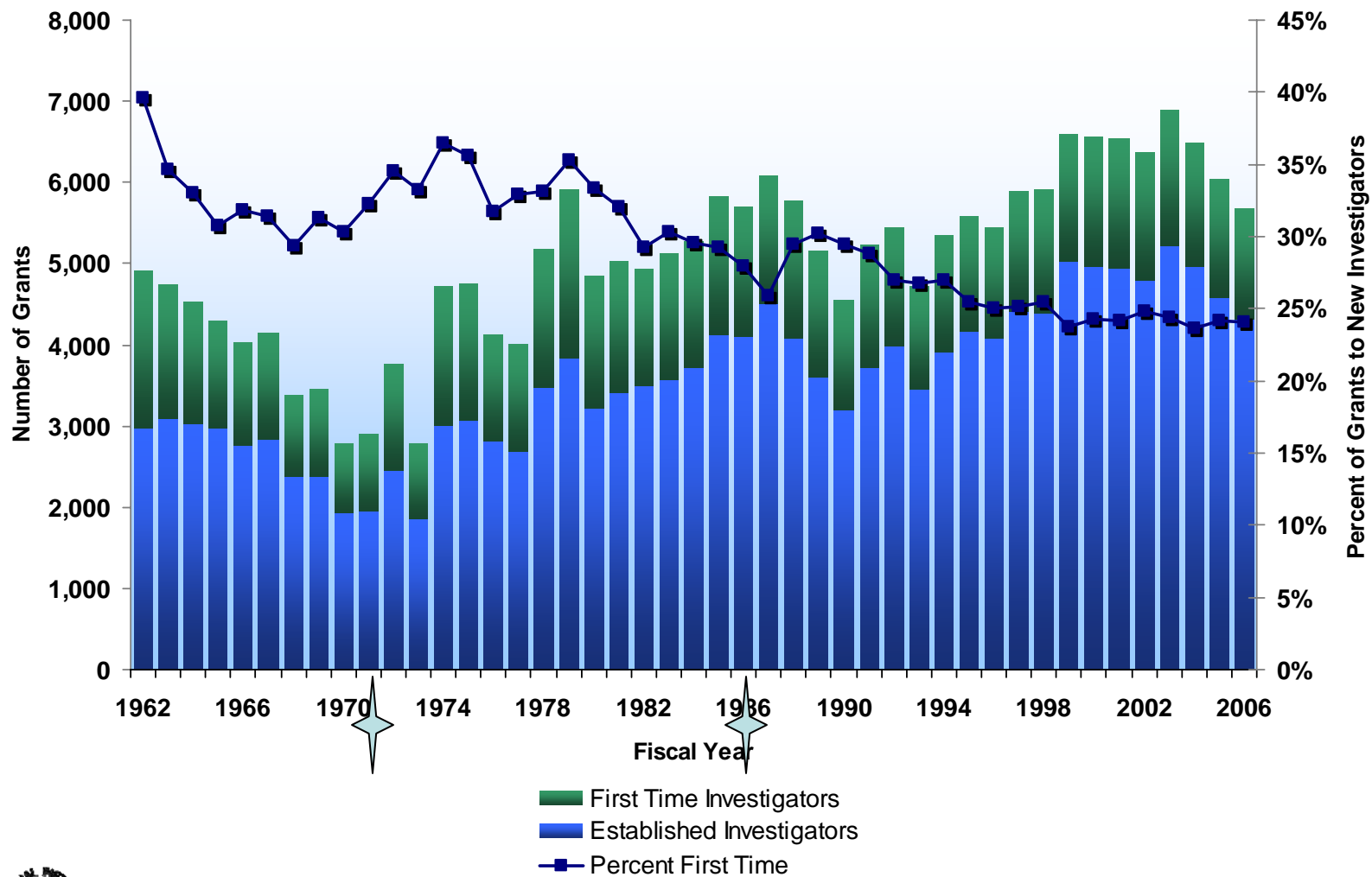


PERCENTAGE OF FIRST TIME INVESTIGATORS USING THE INDICATED RESEARCH PROJECT GRANTS



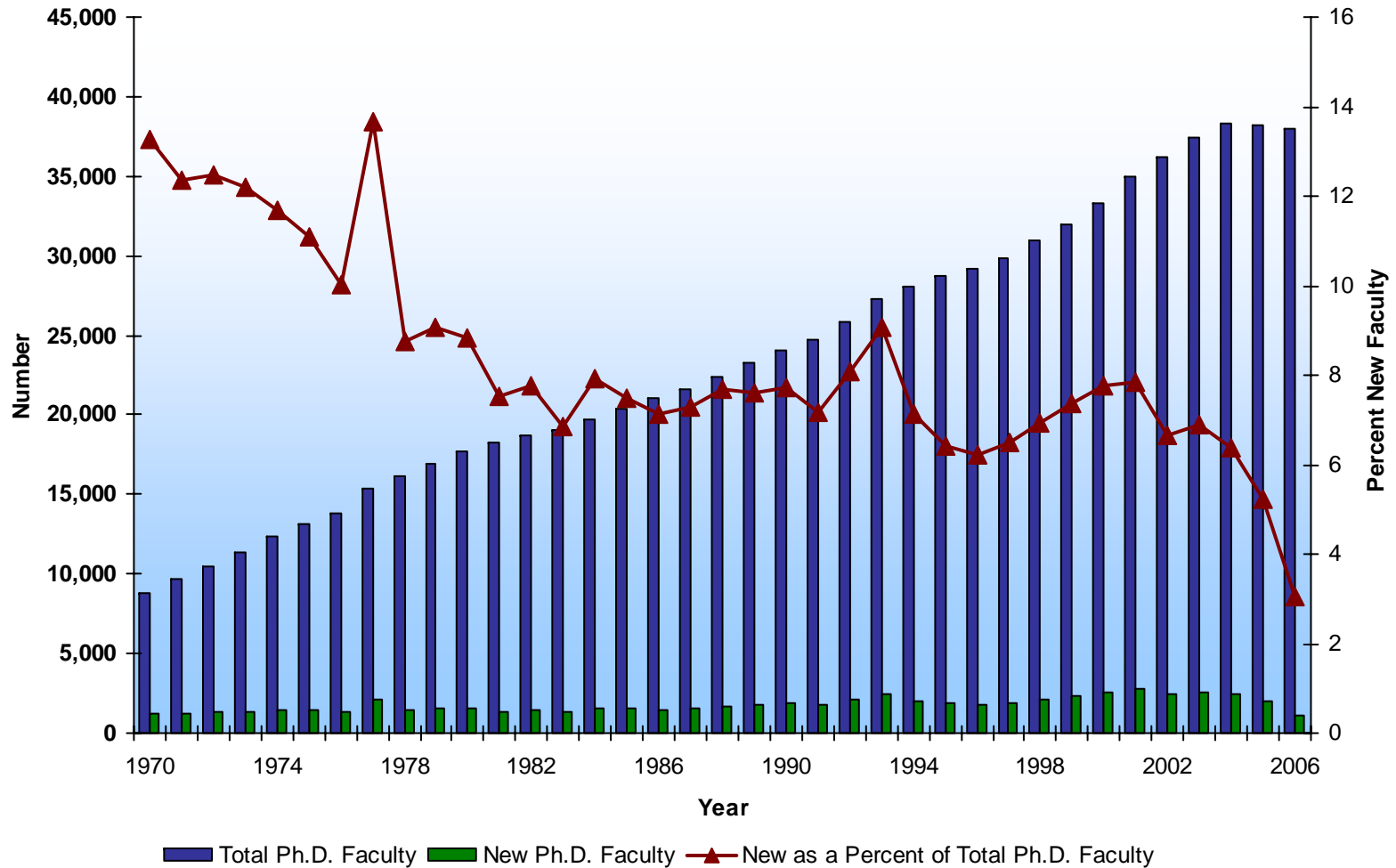


NUMBER OF FIRST TIME AND ESTABLISHED INVESTIGATORS RECEIVING COMPETING R01-EQUIVALENT AWARDS



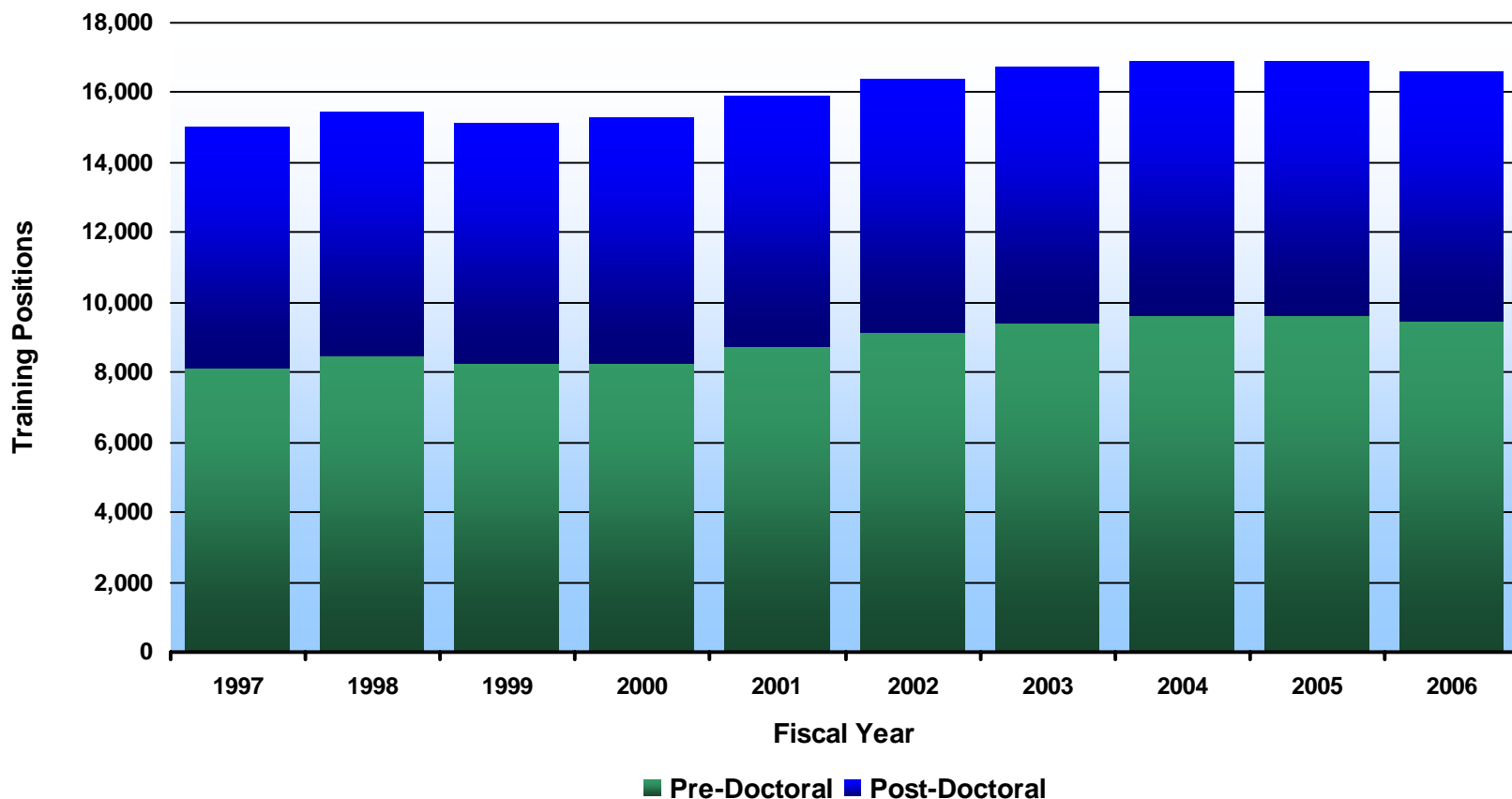


Total & New Faculty 1970 to 2006 in U.S. Medical Schools (Association of American Medical Colleges)





PRE-DOCTORAL AND POST-DOCTORAL POSITIONS ON KIRSCHSTEIN-NRSA TRAINING GRANTS AND FELLOWSHIPS





Questions to consider...

- What has been (or is or will be) the impact of below inflation budgets?
 - On investigators?
 - On institutions?
 - On science/biomedical research?
- What are appropriate roles and responsibilities of investigators, institutions and of the NIH in addressing these issues?
- How should NIH...
 - Protect our investment in investigators and institutions?
 - Ensure that creative and talented new investigators continue to choose careers in biomedical research?





Thank you very much for your attention!

