

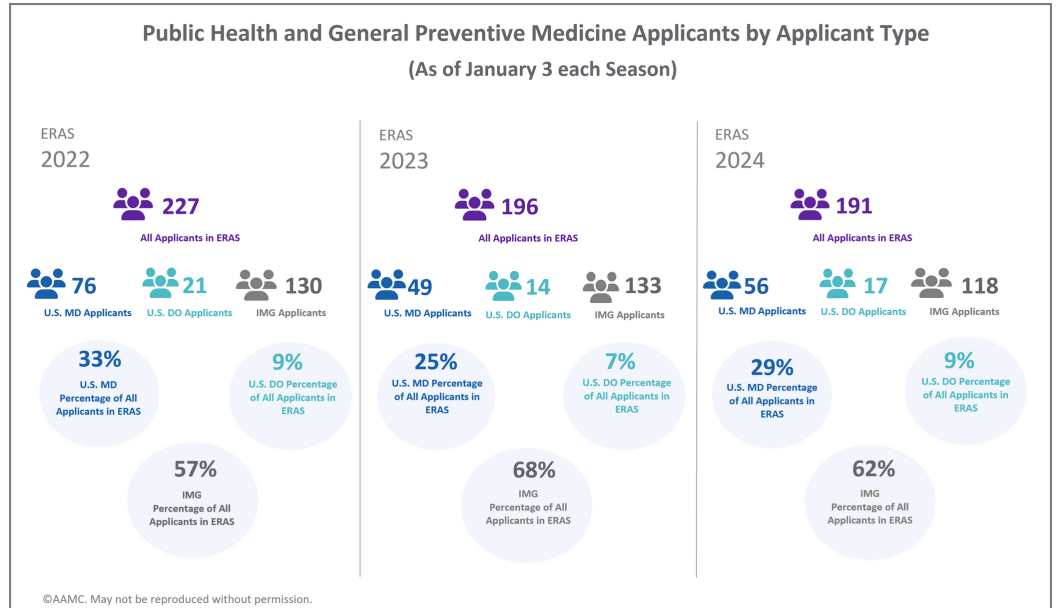
# Customizable AAMC Data Public Health and General Preventive Medicine



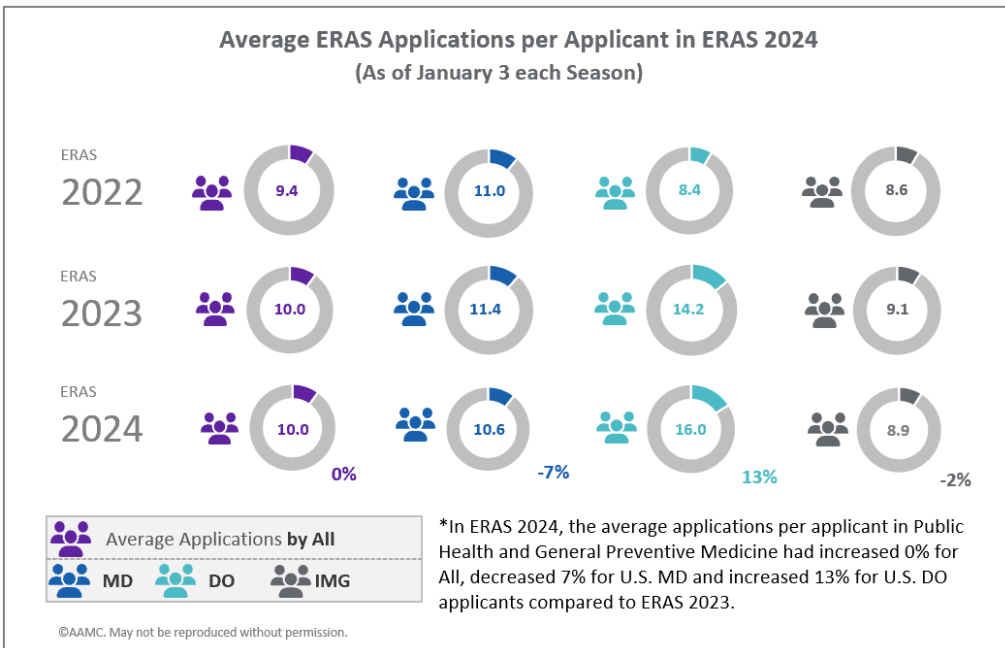
At the center of the transition to residency ecosystem, the AAMC is uniquely positioned to provide comprehensive and customizable data to our institutional partners to support their strategic planning. The charts below provide a sample of the vast data available for Public Health and General Preventive Medicine programs through the AAMC.

## Applicants by Applicant Type

Source: ERAS National Statistics



### Average ERAS Applications per Applicant in ERAS 2024 (As of January 3 each Season)

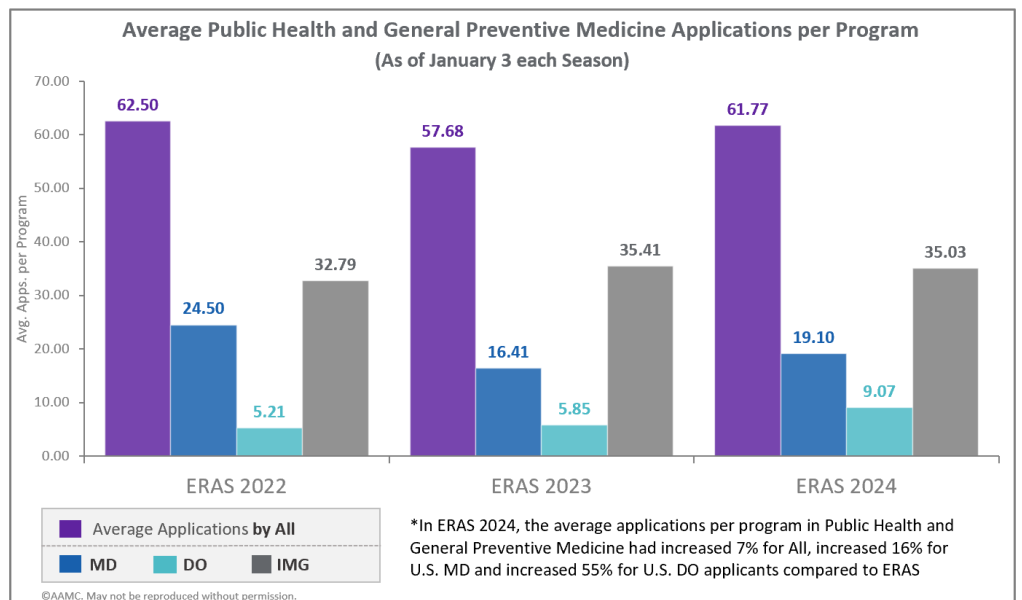


## Average Applications Per Applicant

Source: ERAS National Statistics

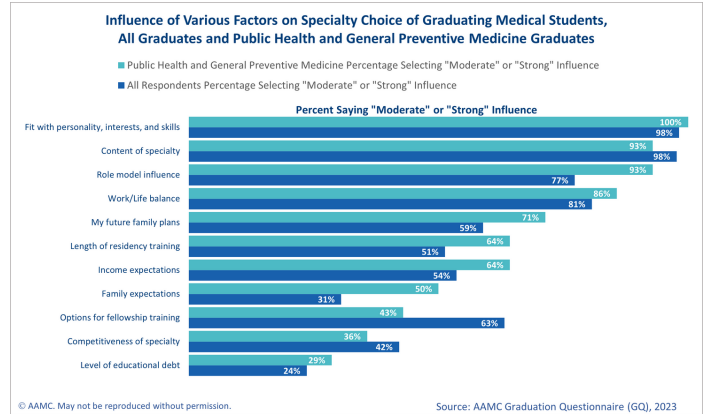
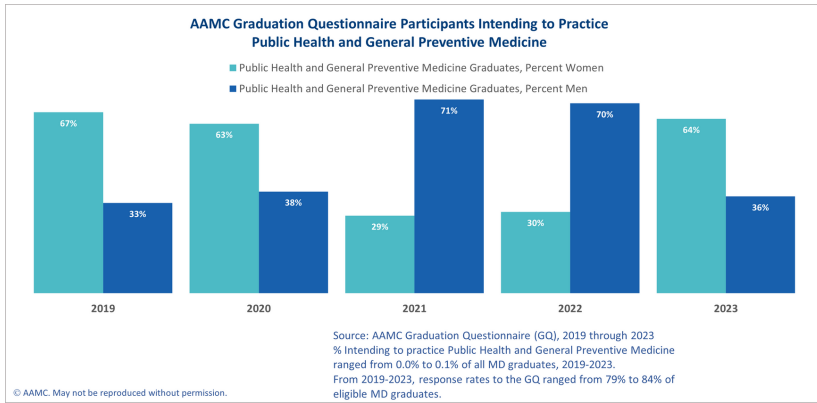
## Average Applications Per Program

Source: ERAS National Statistics



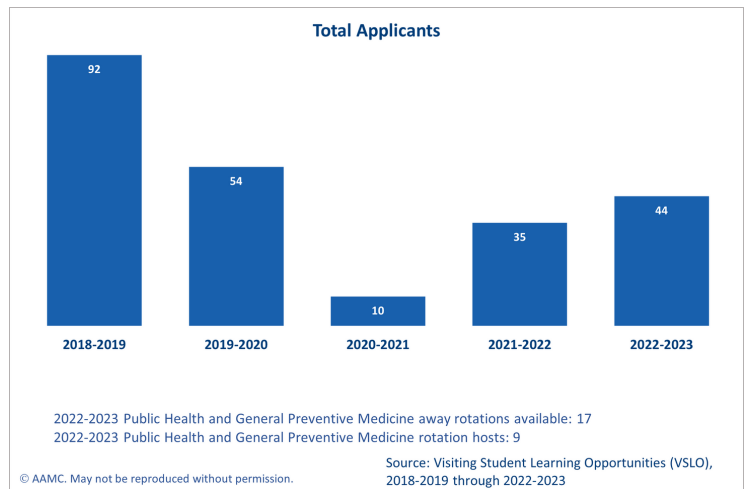
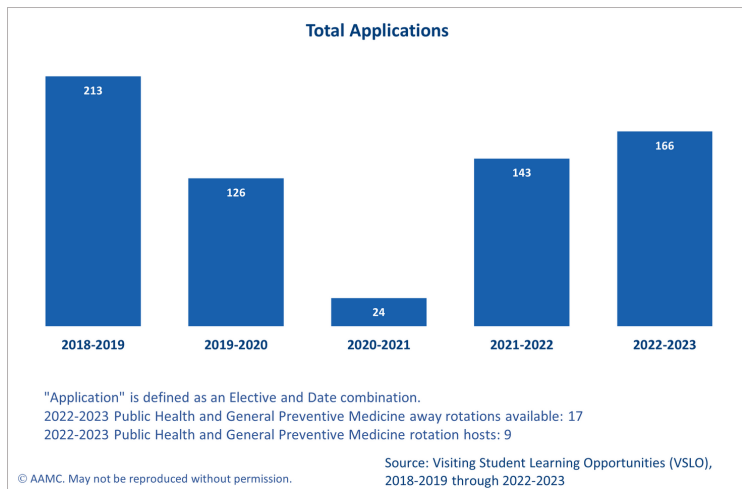
# Graduates Intending to Practice in the Specialty

Source: AAMC Graduation Questionnaire (GQ)



# Away Rotation Data (VSLO)

Source: Visiting Student Learning Opportunities™ (VSLO®)



# AAMC US Physician Workforce Data

## Total U.S. Physicians in Public Health and General Preventive Medicine, 2022

Source: AAMC U.S. Physician Workforce Data Dashboard

Total Physicians	6,647
Percent Female	36.6%
Percent Under Age 40	6.0%
Percent Aged 65 and Older	46.7%

### Physicians by Race/Ethnicity

American Indian or Alaska Native	0.4%
Asian	10.8%
Black or African American	8.9%
Hispanic, Latino, or of Spanish Origin*	4.2%
Multiracial (non-Hispanic)	1.0%
Native Hawaiian or Other Pacific Islander	0.0%
Other	0.8%
Unknown	16.7%
White	57.3%

\*Alone or in combination

### Physicians by Medical School Location

U.S. Medical School	85.2%
International Medical School	13.4%
Canadian Medical School	1.4%
Unknown	0.0%

### U.S. Medical School Graduates by Degree

U.S. MDs	89.8%
U.S. DOs	10.2%

### Physicians by Major Professional Activity

Office-Based Practice	50.9%
Administration	16.3%
Hospital-Based Full-Time	11.8%
Not Classified	7.9%
Research	6.6%
Other	4.2%
Medical Teaching	***
Locum Tenens	***

\*\*\* denotes values that have been masked due to small cell sizes.  
Source: American Medical Association Physician Professional Data (Dec. 31, 2022). Race and ethnicity data from AAMC sources (e.g., MCAT, AMCAS, ERAS).  
© 2023 Association of American Medical Colleges. May be reproduced and distributed with attribution for educational and noncommercial purposes only.  
Created by Rosalie Kelly, Senior Research Analyst